

# **POWERLAUNCHER WEH Manual**

**Rev 1.0**

*Contains Information proprietary to*  
**PointMobile**



<i>Revision History</i>			
<i>Rev</i>	<i>Change Description</i>	<i>Date</i>	<i>Auth.</i>
<i>1.0</i>	<i>Preliminary</i>	<i>07/03/2014</i>	<i>Dennis Kim</i>
	-		

## **Table of Contents**

POWERLAUNCHER WEH Manual .....	1
Rev 1.0 .....	1
1 Introduction .....	4
2 2. Installation .....	5
2.1 Auto Installation.....	5
2.2 Command Line Option.....	5
3 USER Mode.....	6
3.1 Start Screen .....	6
3.2 Password Input Screen .....	7
3.3 About POWERLAUNCHER USER MODE .....	7
3.4 Running Program with PowerLauncher.....	8
4 ADMIN Mode .....	9
4.1 Start Screen .....	9
4.2 Add Program.....	9
4.3 Program Modification.....	11
4.4 Program Delete .....	13
4.5 Setting Option .....	13
4.5.1 Standard Option.....	13
4.5.2 Applet Setting Option.....	14
4.5.3 Change Password .....	15
4.5.4 Registry Apply Option .....	16
4.6 User mode Modify and Exit.....	17
4.7 About PowerLauncher Admin Mode.....	18
5 Registry Information.....	20

## **1 Introduction**

- 'PowerLauncher' is an application program that control user activity on a set of approved programs on mobile device. 'PowerLauncher' will replace graphic user interface with secured execution screen which shows approved programs and options.
- 'PowerLauncher' is designed for using a certain approved program on devices. It can prohibit user on sensitive and important part of the device.
- 'PowerLauncher' has two different modes, USER Mode and ADMIN mode. USER Mode shows listed approved application program that can be used with 'PowerLauncher' to user. User can have access to those listed application programs.
- ADMIN Mode can access debug mode in order to organize 'PowerLauncher' which can add or delete, activate or deactivate, and identify organization of program.

## 2 2. Installation

- Install 'PowerLauncher' on Window Mobile device and set Registry information

### 2.1 Auto Installation

- Install POWERLAUNCHER\_WEH\_Vx.x.cab file
  1. Copy POWERLAUNCHER cab file to %AutoInstall%\Cabfile folder on SD Card
  2. Insert SD Card to the device
  3. SW Reset and stand by
  4. Check POWERLAUNCHER cab file's auto installation, and automatically reset device.
  5. 'PowerLauncher' – Run User Mode to confirm
- Installation file list
  - PowerLauncher.exe – Installed folder: %Windows
  - PowerLauncherAdmin.exe - Installed folder: %Windows
  - PowerLauncherTaskBar.exe - Installed folder: %Windows
  - PowerLauncher.lnk
    - ◆ Installed folder: %Windows%\Startup / %Windows%\Programs

### 2.2 Command Line Option

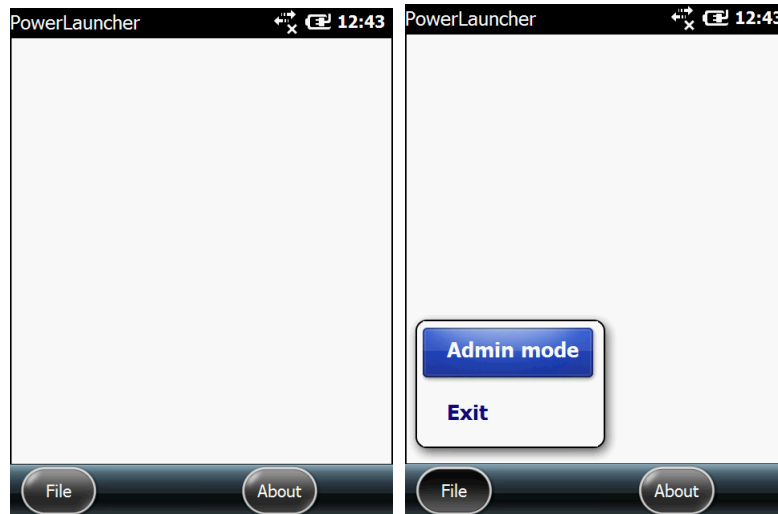
- Command line option can be appointed when 'PowerLauncher' is executed
- Below Command line factors can be used to edit lnk file in program or include in program.
  - terminate
    - ◆ 'PowerLauncher' – Close User mode process
  - restart
    - ◆ 'PowerLauncher' – Close User mode process and a new process will start.  
It is restart operation, and all changes will effect.

### 3 USER Mode






- USER Mode is POWERLAUNCHER Mode which users can see.
- Administrator can setup available programs and actions in USER Mode
- 'POWERLAUNCHER' needs a password when it is closed and/or changes to ADMIN Mode.

#### 3.1 Start Screen

- Application is not registered at start.
- Basic Menu is same as below.
  - [File] -> [Admin mode]: Change to ADMIN Mode
  - [File] -> [Exit]: Close Program.
  - [About]: PowerLauncher User mode version will be on screen.

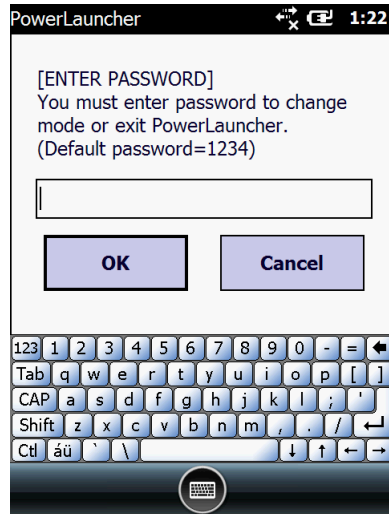


- Menu registration is available after the program is changed to ADMIN Mode.
- BATTERY / WIF ICON and time information are expressed.
- Battery status button
  - Power/Battery mode and Battery status will change battery ICON.
  - Select the ICON and you can execute Power applet.
- Wifi status button
  - WIFI Connect status will change the ICON.
- Time information
  - Current time information on the device will be expressed.
  - DateTime applet can be executed by selecting factors
- ICON Lists on the top of the screen

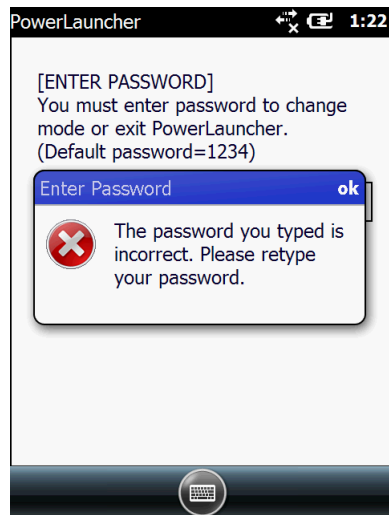
	WiFi Connect		WiFi Disconnect	
	Battery Charging		Battery very Low	

### 3.2 Password Input Screen

- Password confirmation will be required when you enter Admin Mode or close 'PowerLauncher'.
  - [File] -> [Admin Login]: changes to ADMIN Mode
  - [File] -> [Exit]: Close the program.



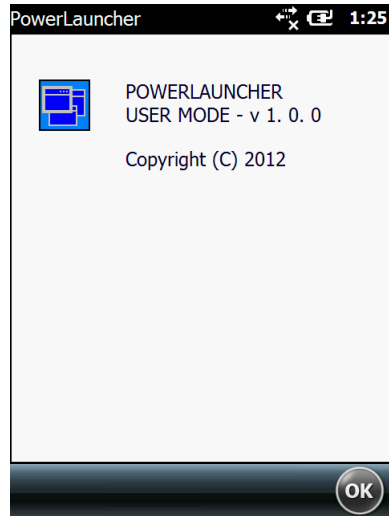
- [Admin mode] can be used after you input the correct password.
- PowerLauncher's initial password is [1234].
- Password is incorrect; error message will appear as below.



- Please refer to 4.5.3 change password in order to change Password.

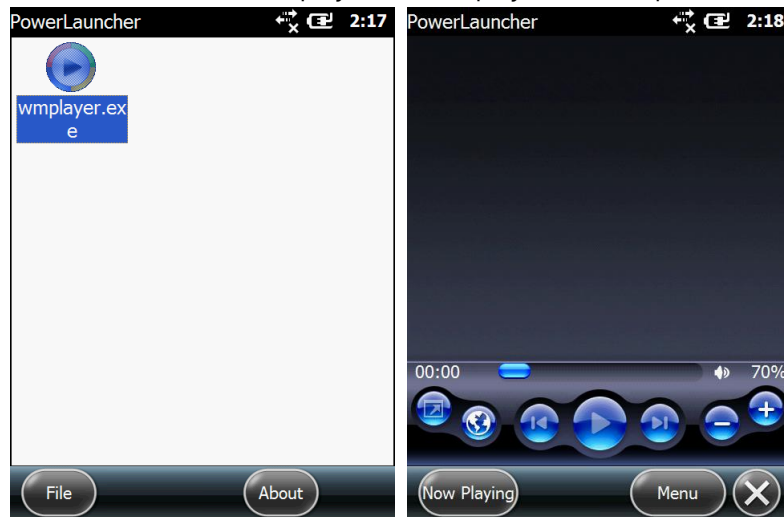
### 3.3 About POWERLAUNCHER USER MODE

- Select [About] Menu, POWERLAUNCHER USER MODE will appear as below.  
 Please make sure the version is up to date when it is released.



### 3.4 Running Program with PowerLauncher

- Please refer to 4.2 [Add Program] about adding program.
- After program is added through Admin mode, if you change to User mode, 'PowerLauncher' will restart and the list of program will be updated.
- Program list, which is added through ADMIN Mode, will show up as below and the program can be executed.
  - Ex) Double click wmpplayer.exe, wmpplayer (on left picture) is executed.



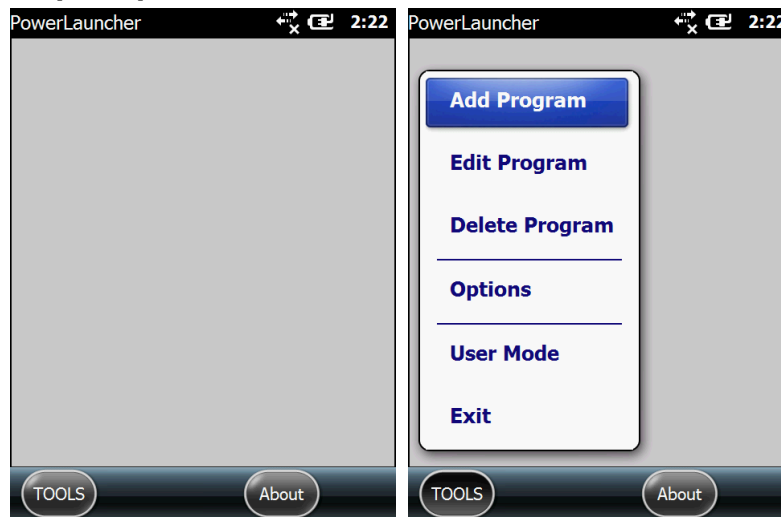


## 4 ADMIN Mode

- ADMIN Mode provides program add, option and tool setting.
- Administrator can add, change and delete programs in approved program list.
- You can setup taskbar, status mark from option.
- You can change from POWERLAUNCHER ADMIN MODE to USER MODE or close the program

### 4.1 Start Screen

- None of programs is registered on start screen1234
  - [TOOLS] -> [Add Program]: You can add new program
  - [TOOLS] -> [Edit Program]: You can edit the program.
  - [TOOLS] -> [Delete Program]: You can delete the program on the list.
  - [TOOLS] -> [Options]: You can set up options of 'POWERLAUNCHER'.
  - [TOOLS] -> [User mode]: Change to PowerLauncher User mode.
  - [TOOLS] -> [Exit]: Close 'POWERLAUNCHER'.
  - [About]: Show the version information of PowerLauncher Admin mode.



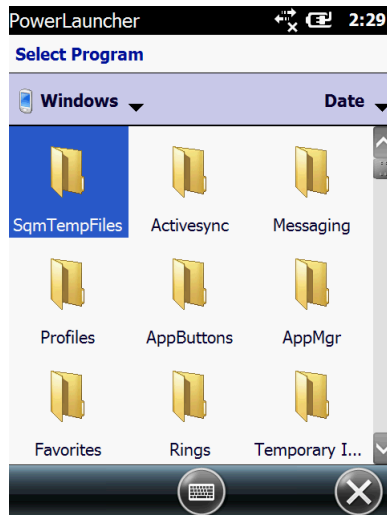
- After program add/edit/delete, option change, you can confirm the modification through POWERLAUNCHER User mode.

### 4.2 Add Program

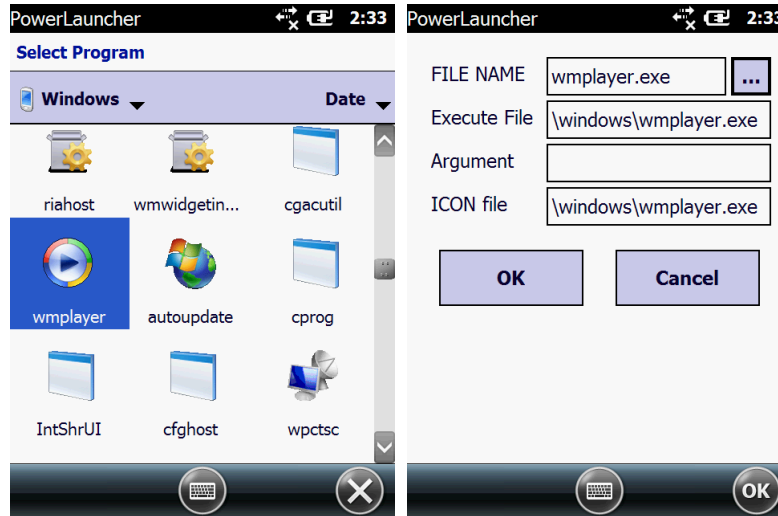
- It is a function to upload new file on the list
- Go [TOOLS] -> [Add program]



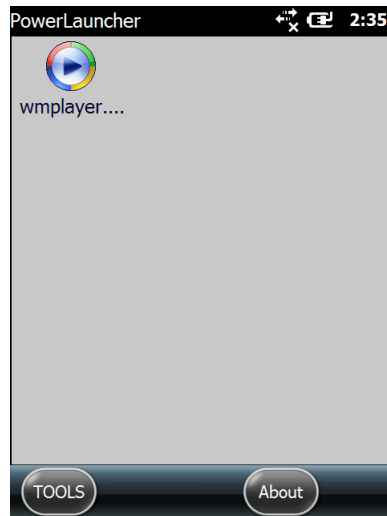
- FILENAME – Select the file name on the list
- Execute File – Select the actual folder of the file and the name.
- Argument – Apply Argument which will be applied on file
- ICON File – Select ICON file which will show up on the list.
- How to add new file.
  1. Click [...] next to 'FILE NAME'
  2. FILE OPEN Dialog shows up on the screen.
  3. \Windows is the main folder. EXE/LNK will show up with basic setting.



4. Change the file extension that you are looking for and select EXE/LNK/CPL file.
5. Click [OK] after you select the file.



6. Add program screen will open again and files will be listed according to the extension you select
7. Select file and click [OK] to save and close the screen.
8. Check the ICON and the name on the list.



- You can edit/delete file on the list.
- After the program is added %Program files%\POWERLAUNCHER\Setupfile.txt file will be created and changed.

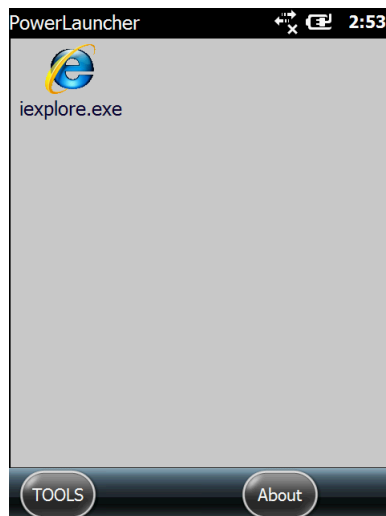
### 4.3 Program Modification

- You can select and edit program on the list
- Go [TOOLS] -> [Edit program] to edit.
- How to edit the program.
  1. Select the program on the list
  2. Select [TOOLS] -> [Edit program]

- Use [...] button, which is next to FILE NAME, to find program.



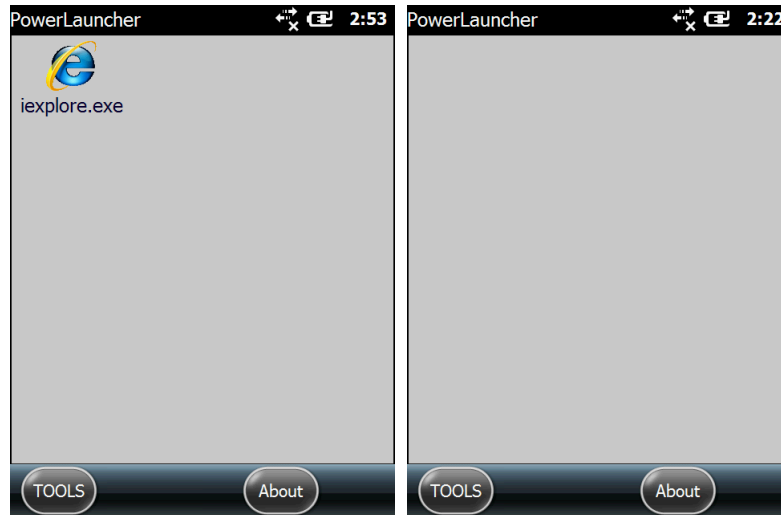
- Select new program or add Argument, and click [OK] to save.
- Check the ICON and the file name on the list.



- After the program is edited `WProgram files\POWERLAUNCHER\Setupfile.txt` will change.

## 4.4 Program Delete

- This is a function to delete program on the list



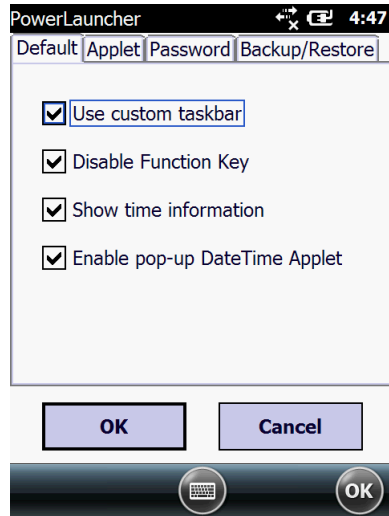
- How to delete program
  1. Select the program on the list.
  2. Go [TOOLS] -> [Delete program]
- Once the program is deleted `WProgram files\POWERLAUNCHER\Setupfile.txt` file will change

## 4.5 Setting Option

- Go [TOOLS] -> [Options] to set the option.

### 4.5.1 Standard Option

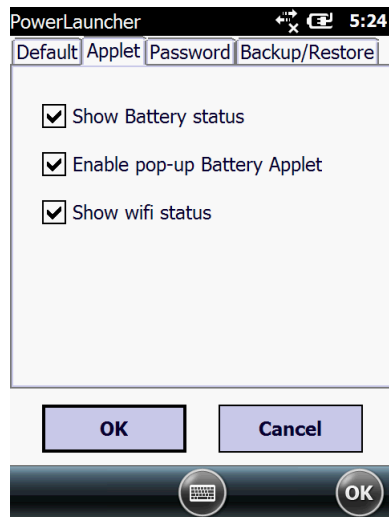
- Go [Default] tab to check the setting.
  - [Use custom taskbar]: If set this option, windows mobile default taskbar can be disabled.
  - [Display function Key]: Set Function key Enable/Disable. With Function key on Keypad, Windows, Calibration and F1~F10 keys can be disabled.
  - [Show time information]: Set date time indication on/off.
  - [Enable pop-up DateTime Applet]: Execute DateTime Applet on date time information.



- Click [OK] button, then all changes will be applied.

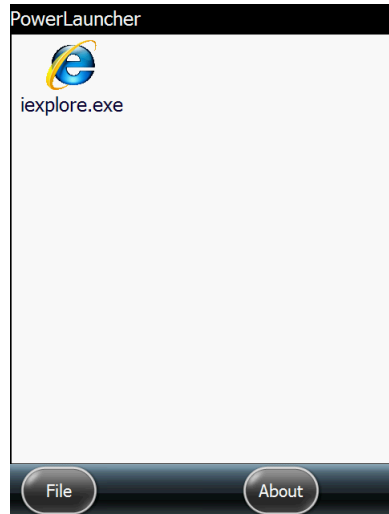
#### 4.5.2 Applet Setting Option

- This checks [Applet] Tab setting.
  - [Show Battery status]: Shows Battery status with ICON. ICON will change as Battery status changes.
  - [Enable pop-up Battery applet]: To click Battery ICON can execute Power Applet.
  - [Show WI-FI status]: Shows WI-FI status.



- POWERLAUNCHER UI will be changed as Default / Applet Option changes as below.
  - [Show time information] Clear
  - [Enable SIP] Clear
  - [Show Battery status] Clear

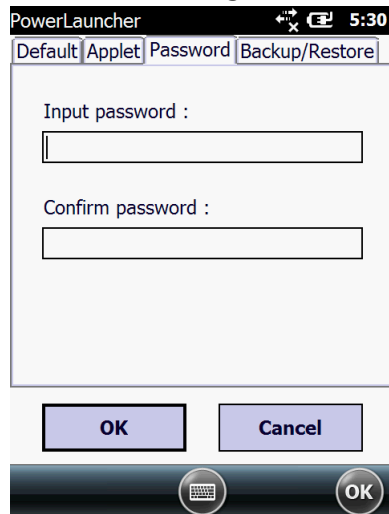
■ [Show Wifi status] Clear



- After clear the box, ICON will disappear on taskbar
- Click [OK] button to apply all setting on TAB

### 4.5.3 Change Password

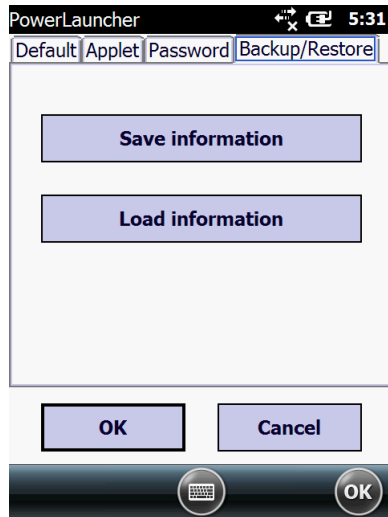
- Select [Password] Tab.
- You can change password on this setting
- Appoint same password on [Input password] and [Confirm password] then Click OK button to change it.



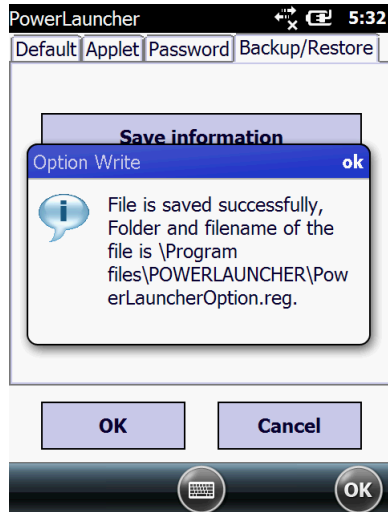
- Click [OK] to apply all changes on TAB.
- Once the password changed Default password can't be used when you change User / Admin Mode or close the window.

### 4.5.4 Registry Apply Option

- Select [Backup/Restore] Tab.
- [Save information]: Save as Registry file which has options and password
  - %Program files%\POWERLAUNCHER\PowerLauncherOption.reg is where Registry will be located.
- [Load information]: Apply existing information on file to Registry.
  - %Program files%\POWERLAUNCHER\PowerLauncherOption.reg file will be used and when there is no file, it won't be applied.

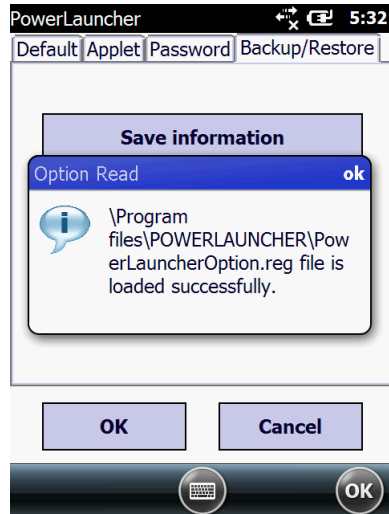


- After you save Registry information, you will see a screen as below picture.

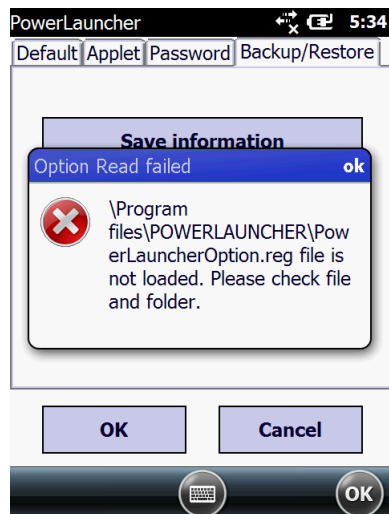


- When you load Registry, you will see a screen as below picture.



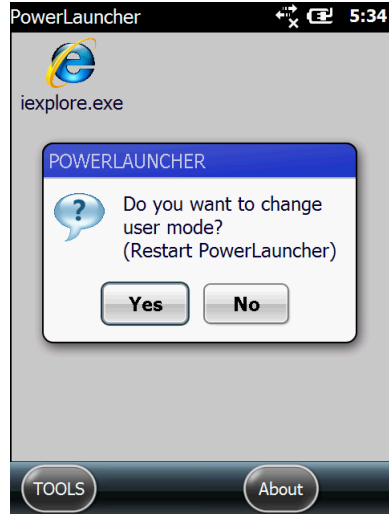


- When the file was not loaded successfully, you will see a screen as below.

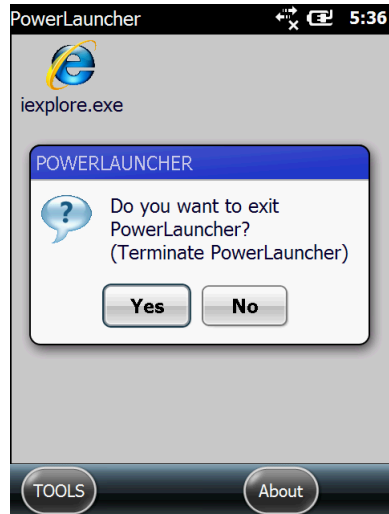


## 4.6 User mode Modify and Exit

- [TOOLS] -> Select [User mode], you can change to POWERLAUNCHER User mode. PowerLauncher Admin mode will be closed; the device will restart in order to apply new setting on User mode.
- When you change the Mode, you will see a screen as below.



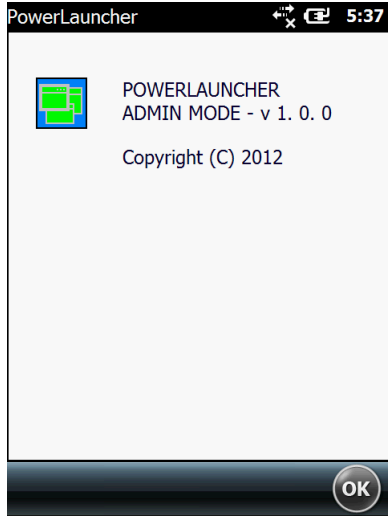
- [YES]: PowerLauncher Admin mode will close and User mode will be applied.
- [NO]: PowerLauncher Admin mode will not close..
- [TOOLS] -> Select [Exit], PowerLauncherAdmin MODE and POWERLAUNCHER will close
- In Admin Mode, if 'PowerLauncher' is closed, you will see a screen as below..



- [YES]: PowerLauncherAdmin and POWERLAUNCHER will close..
- [NO]: PowerLauncherAdmin will not close.

#### 4.7 About PowerLauncher Admin Mode

- [Help] -> Select [About] POWERLAUNCHER Admin mode version will show up as below.
- When you release, please check the update is up to date.



## 5 Registry Information

- These are Registry list of Option and Password in 'PowerLauncher'.

```
[HKEY_CURRENT_USER\Software\POWERLAUNCHER]
"WIFI"=dword:00000001
"BATTERY"=dword:00000001
"DATETIME"=dword:00000001
"WIFIAPPLET"=dword:00000000
"PASSWORD"=hex:1c,66,53,3d,69,3e,d2,42,d6,68,fc,53,ab,f6,47,7d,16,4b,f2,40,  W
                    59,3c,67,dd,a3,49,41,30,bb,2e,7e,0c,24,63,c7,d7,f9,f8,fd,c5,  W
                    a4,17,b4,c3,5d,da,20,99,0e,7d,2a,bb,5a,1a,09,92,71,9a,3b,46,  W
                    d6,b6,d4,b6,a7,0a,c6,19,cd,9a,ff,44,75,2e,25,c4,7e,e7,77,57,  W
                    4e,fc,46,b2,11,ce,07,53,2b,a4,4b,a3,82,55,6f,19,a8,a8,a8,2b,  W
                    ec,5d,f9,36,36,96,98,f1,09,38,7a,6c,c9,99,2b,29,91,c6,40,4f,  W
                    15,11,b6,d1,50,05,b1,4D
"BATTERYAPPLET"=dword:00000001
"DATETIMEAPPLET"=dword:00000001
"FUNCTION"=dword:00000001
"TASKBAR"=dword:00000001
```

- Option setting on Admin Mode will be saved.